



SOTRAVIC



Environment



Energy



Infrastructure



FOUNDER AND CHAIRMAN

Pierre AH SUE C.S.K started his career as a registered Professional Civil Engineer in 1982. He founded Sotravac Limitée in November 1986 as a civil engineering construction company.

Over the years Sotravac has expanded rapidly to become a leader in the Infrastructure, Waste and Energy and Engineering services Sectors in Mauritius.

Owing to his remarkable contribution in the field of Green Energy, in 2011 Pierre Ah Sue was elevated to the rank of Commander of the Star and Key of the Indian Ocean (C.S.K) by the President of the Republic of Mauritius.

In 2012 he was awarded the prestigious Tecoma award for Entrepreneur of the year.

Today, as Executive Chairman, he remains the driving force of diversification in the Group with new projects in renewable energy generation, infrastructure development and environmental management.

Pierre Ah Sue has successfully steered the Group from its civil engineering origins to become a major player in the fields of Environment, Water infrastructure and Waste Management as well as being an Independent Power Producer of renewable energy in Mauritius.

The Group consists of two Strategic Business Units (SBUs) and three subsidiaries as depicted in the Group Structure. It has operations in Mauritius and is presently on the African Platform for doing business.

BOARDS OF DIRECTORS

Sotravac Group is managed by a Board of Directors, with Pierre Ah Sue the Executive Chairman, Vice Chairman Eddy Ah-Yu and two non-executive Independent Directors. In addition, the Company has ensured a gender balance on the Board, by also having female Executive Director.

The Board is committed to developing policies and structures that maintain and enhance high standards of governance as well as being a responsible employer and active member of the communities in which Sotravac Limitée operates.

CORPORATE GOVERNANCE

Sotravac has adopted the National Code of Corporate Governance and ensure adherence to the fundamental principles of Corporate Governance as set out in the Code.

The Company Governance Strategy is to ensure that the interest of all the stakeholders, namely employees, bankers, creditors and last but not least the community, are safeguarded.

The Board considers the capacity and capability of our employees, the human capital as the cornerstone for the Group sustainability. Investing in our people has been a key focus in supporting the Group's vision of diversification.

Besides, the Board, the Company has established the Risk Management and Audit Committee (RMAC), which is a combination of the Audit and Risk Committees.

This Committee is responsible amongst others, to assess the risks pertaining to the Group activities and set a plan to manage, monitor and mitigate these risks.

The RMAC also liaises with the External Auditor, on audit issues, monitor the integrity of the Financial Statements, the Company policies and processes and reports directly to the Board.

SHARED SERVICES

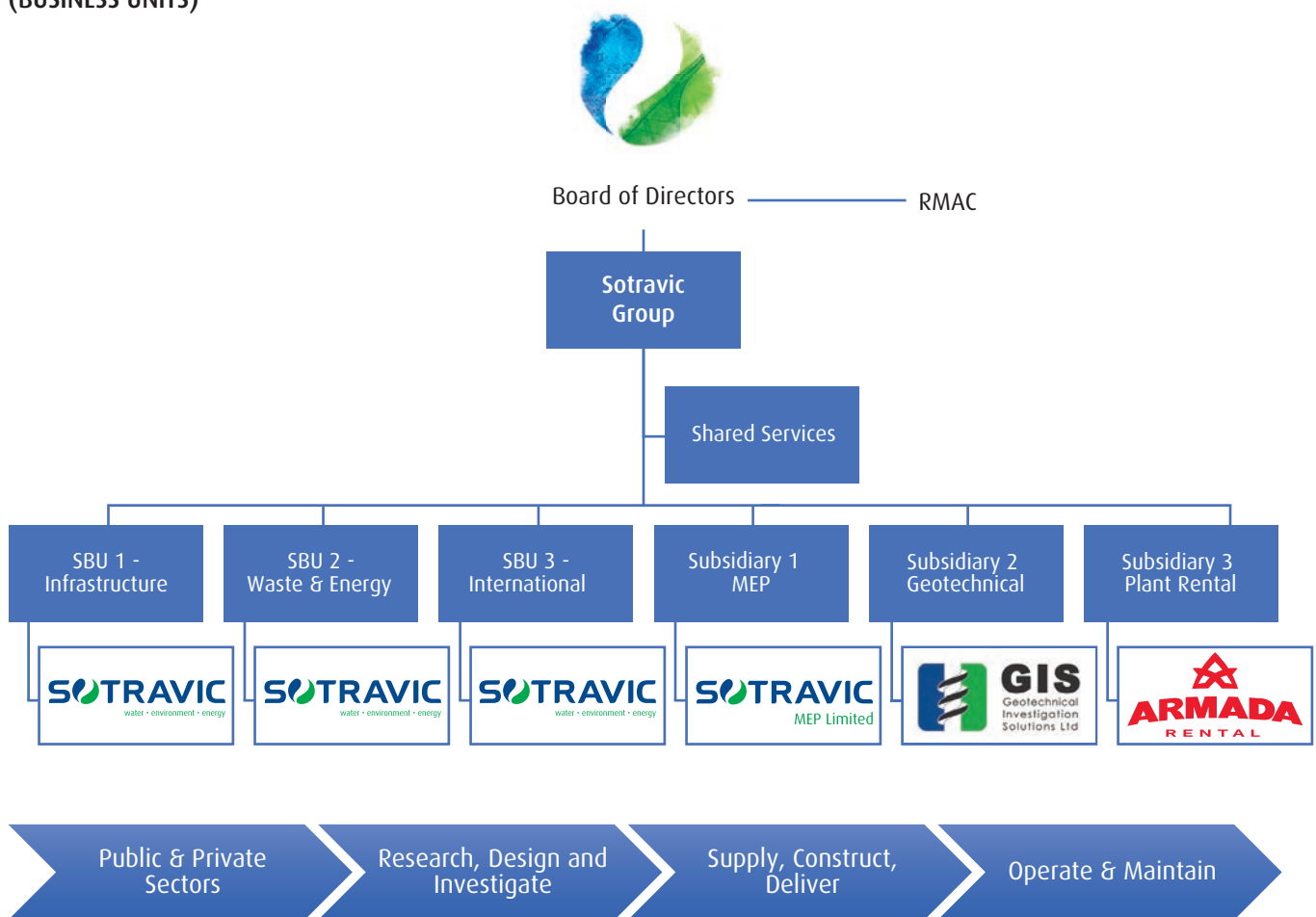
Sotravac Ltee has adopted the approach of a Shared Service Centre (SSC) because it provides certain flexibility. The Shared Service Centre provides services such as Finance, Procurement, Information Technology, Human Resource and Administration. Having a Shared Service Centre allows the Company to optimise the working practices and the resources, which not only reduces costs, but also helps to improve control and enhance service levels.

The main benefits of our SSC are;

- a commitment towards better control;
- allows standardisation of service and thus improve the level of service;
- ease of data capture and provision of accurate information to the Board;
- recognition of sensitive data, and able to deliver clean financial operation benefits.

The SSC continued focus on improvement with the aim of optimization of costs and at the same time maintaining its service level.

GROUP STRUCTURE (BUSINESS UNITS)



Sotravic is one of Mauritius's leading Engineering, Contracting and Environmental Services companies. It has created employment, developed skills, applied technology and delivered infrastructure throughout Mauritius and Indian Ocean Islands in Sewer and Water infrastructure, Waste and Landfill management, Geotechnical investigation and Renewable Energy solutions.

INNOVATION STRATEGY

Change and innovation have been the key drivers of advancement and diversification for Sotravic Limitée. Innovation has not only become a differentiator in our competitive market but a strategic tool for empowerment of our people as staff are encouraged to find smarter ways of doing business.

Our Research & Development department are constantly researching any new technologies available with a focus on Energy Generation or Conservation that is both environmentally friendly and beneficial to society.

Expansion into Africa, a key strategic market, where Sotravic is engaging in partnering solutions in landfill, waste management waste to energy and infrastructure solutions similar to our model in Mauritius.

The Group is currently in discussions with various governments for Gas to Energy concessions.

With an investment of MUR 243 million over the past 4 years, we have been able to allocate Rs 90 million to innovation, renew our main equipment, strengthen many aspects of the company's operations and implement the new structure at all levels.

The company continues to work towards its strategic plans in building long-term and sustainable growth for the Group by strengthening its key pillars of Infrastructure, Waste & Energy, Engineering solutions and Equipment rental.

COMMITMENT TO QUALITY & SAFETY

Sotravac's commitment to completing contracts on time, to specification, with no serious injury or accidents lies at the core of its focus.

Our commitment to quality has been fundamental to our success. We deliver quality products and services in full compliance with its contractual requirements. From planning to execution, we seek the best possible engineering methods of execution, taking into account the strict public service delivery requirements, quality of material and maintainability.

Due to the nature and location of most of its projects, Sotravac has inherently a very high Public Safety Risk which has to be managed 24/7. In close co-operation with the Authorities and dedicated safety personnel Sotravac is able to ensure this and also create a safe working environment.

Sotravac's commitment to a Safety First culture is testament to its good safety record and prides itself in having an industry-leading safety record, with all employees from the top down being provided with training to international standards.

The wellbeing of our employees is of paramount importance, and a huge emphasis is placed on ensuring that our procedures are correctly implemented to ensure the safest possible working environment for all.

Sotravac strives to be a leader when it comes to environmental consideration and is actively participating in finding ways to use green solutions on its projects.

TRAINING

Investing in our people has been a key focus in supporting the Group's vision of quality commitment, diversification and sustainability.

Sotravac participates annually in the national endeavour to enhance the employability of young graduates by welcoming them for short-term Placement/'stage en entreprise'.

CORPORATE SOCIAL RESPONSIBILITY (CSR)

Sotravac Limitée has been focusing and giving support to collective and social actions at large since its inception and well before the Government enforced a legislation.

Sotravac contributes 2% of its profits annually to the Pierre Ah Sue Foundation who manages the company's CSR Fund and related activities in the Community.



GROUP RESULTS

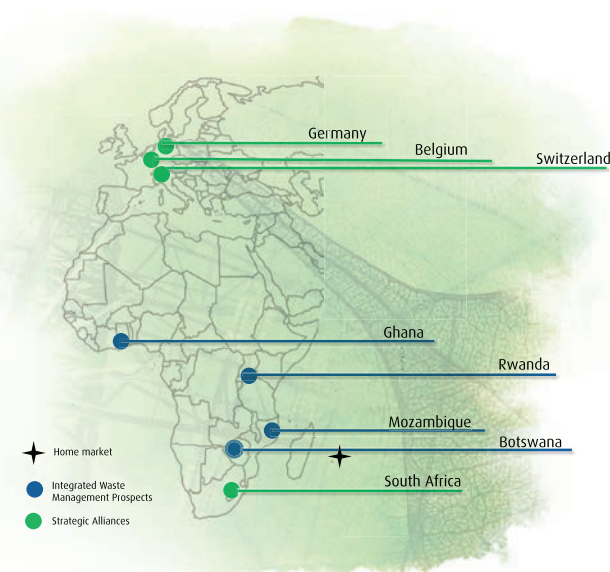
Whilst our core business Water and Sewer infrastructure contributes about 60% of the Groups turnover, the company has now fully evolved into a major player in the environment industry, designing and driving projects in solid waste as well as new projects in energy, thermal energy or real estate.

Our other business units such as the Equipment Rental, Geotechnical Solutions and MEP are fast becoming key market players and are positively contributing to the Groups turnover.

Sotravac has been listed as one of Mauritius' Top 100 companies for the past 10 years.

OUR GLOBAL FOOTPRINT

We are constantly building new partnerships as sources of innovation, differentiation and growth to add value to the products and services we provide.



STRATEGIC BUSINESS UNIT 1 INFRASTRUCTURE

For the past 32 years Sotravic has been a major contributor in upgrading of Mauritius infrastructure. The company has executed over Rs 13bn of projects in often very difficult conditions, due to hard volcanic rock and a densely populated and occupied working environment.

To date Sotravic has installed over 700km of water pipelines and 400km of sewer pipeline networks including 40,000 house connections. This includes road reinstatement the construction of reservoirs, major pump stations and treatment plants to manage these networks.

Our Service offering include:

Design, Supply and Installation of new water and sewer pipe networks



Road infrastructure, kerbing, reinstatement and storm water infrastructure



Water & Infrastructure

Construction of pumping stations, reservoirs and treatment plants.



Construction of feeder water canals and bridge crossings.



Major earthworks, dam rehabilitation and construction, Soil erosion protection coastal protection works.



1,100km
of water and
sewer pipelines

STRATEGIC BUSINESS UNIT 2 WASTE & ENERGY

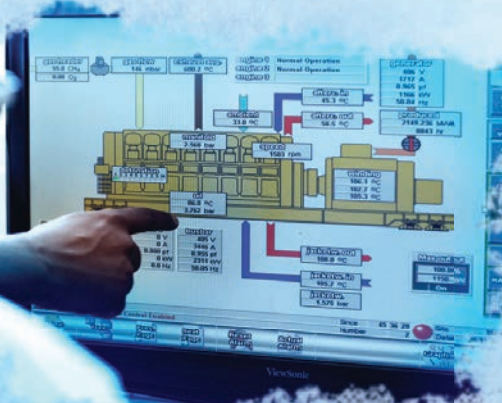
Sotravac Limitée entered the Solid Waste Management industry in 2006 with the contract for the management, operation, maintenance and construction of additional waste cells of the Mare Chicose Engineered Sanitary Landfill Site which, as Mauritius' only Landfill Site, receives over 400,000t of waste per year.



Since the award of Mare Chicose, Sotravac Limitée has extended its presence in this sector by managing various Municipal Waste Transfer Stations, including the daily transportation of waste in long haul carriers to Mare Chicose Landfill site.

As a direct result of Sotravac Limitée's initiative and focused drive towards innovative green engineering solutions, the installation of an upgraded landfill gas extraction system has allowed the Waste Landfill site to become an important source of renewable energy for Mauritius.

Starting in 2012, the 3,3 Mw power plant produces 22 GWh annually of renewable electricity which provides electricity for 50,000 people daily.



Waste & Energy

Today our philosophy is anchored upon the belief that waste is a valuable resource. On par with our strategy, we aim to incorporate recovery, recycling and reuse throughout our operations and those of our clients.

Key Achievements include;

We successfully constructed

23 hectares

of new landfill space in a challenging environment with over 2000mm of rain per year

We received over

420,000 tonnes

of municipal solid waste per year on the landfill site

We produced renewable energy

22 Million kWh

Which represents a total electricity supply for about 50,000 people daily

We captured

12 Million m³

of harmful greenhouse gases with an average methane content of 51%

We generated CERs

83,352

for the crediting period 2015 which have been certified by the UNFCCC

Innovation:

Sotravac can deploy material recovery facilities suitable for sorting recyclables and Anaerobic digesters to degrade organic waste and produce biogas in a controlled environment.

3,3Mw
of power

SUBSIDIARY 1 GEOTECHNICAL INVESTIGATION SOLUTIONS

The Geotechnical Department was established 15 years ago and has gained an extremely strong track record of delivering high-quality engineered drilling, coring, investigation and geo-environmental assessments.

Since then, this department has been incorporated as a subsidiary company; Geotechnical Investigation Solutions Ltd and is now trading as an independent business unit.

GIS can cope with difficult and restricted site access across all ground conditions when executing various types of investigation or drilling works.

Geotechnical Activities

Our drilling teams are trained to the highest standards in soil sampling, testing, gas and water extraction, anchoring, dredging or geo-assessments. Our services include;

- Geophysical surveys,
- Geotechnical investigation,
- Drilling of boreholes,
- Cores or piles,
- Vertical and horizontal anchoring works and
- Dredging of marinas or port channels.



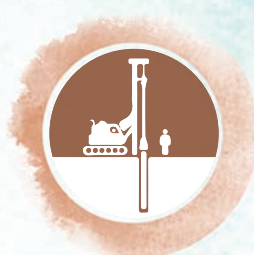
GEOTECHNICAL INVESTIGATIONS



FOUNDATION INVESTIGATIONS



MICRO/SMALL PILING WORKS



DRILLING OF GAS WELLS/BOREHOLES

Geotechnical

We have invested significantly over the past years considering the choice of equipment to ensure its suitability.

A new multi-purpose mini piling rig and Italswis grout batching plant, we have opted for Casagrande and Schramm drilling rigs, which offered us the best multi-disciplined equipment with full backup service as required.



Casagrande C6XP installing horizontal anchors.



GIS
Geotechnical
Investigation
Solutions Ltd

SUBSIDIARY 2 MECHANICAL ELECTRICAL AND PLUMBING (MEP)

Sotravic realized early on that the majority of the Group's water and sewer projects require a high level of electro-mechanical and pump station expertise.

As a result, it was decided to incorporate **Sotravic MEP Ltd** as a dedicated service provider focusing on providing the best possible solution in terms of the Mechanical and Electrical requirements.

Today, Sotravic MEP is responsible for all designs, integration and installation of complex electronics with mechanical and electrical components for both internal and external clients.

No matter what type of facility you require, SMEP have established partnerships with leading specialists and equipment suppliers in areas such as water / sewer treatment plants, pumping stations, telemetry, etc.

Our MEP Services Include:

- Design, Supply and Installation of all pumps and equipment including control panels, chambers, pipework and ducting
- Standby Diesel generators,
- Street Lighting,
- Fire Alarm Installation and Protection,
- Fuel storage systems,
- Hydraulic Protection,

The Pailles Water Treatment plant MEP installation



MEP

Complete Mechanical, Electrical and Instrumentation work



Telemetry installation and monitoring



Operate, Maintenance and service of water and sewer treatment plants



SOTRAVIC
MEP Limited

SUBSIDIARY 3 EQUIPMENT RENTAL

Sotravic identified a market demand for renting heavy and medium size equipment. In 2016 we created and invested in Armada Rental Ltd, a company having a rental pool of well-maintained, reliable and great quality equipment.

Today Armada owns construction and engineering equipment with the largest fleet of hydraulic excavators and air compressors in Mauritius.

Armada is proud to have the largest fleet of excavators on the island ranging from 5 tons to 36 tons. We have accomplished to date the excavation of 2,000,000m³ and backed filled over 4,000,000 m³ of earth on various projects.



We have a 800m² in-house maintenance workshop, tyre store, oil store, wash bay and a 350m² spare parts store.



In addition, Armada employs skilled personnel and operators. The entire fleet is serviced by the representatives of its different A-grade brands. Armada's in-house dedicated service team ensures optimum condition of all our equipment at all times.

Much emphasis is laid on training. The ongoing in-house development programs ensure that staff are trained in all aspects of product performance, system enhancements and service delivery.

Specialized training for our heavy equipment operators is provided by the international manufacturers abroad.

Equipment & Logistics



The company focusses on supplying its customers with quality equipment and unparalleled service. It provides equipment with fully trained operators and 24 hours service assistance to ensure a top-notch service without disruption.

Armada also provides all the logistics of moving its equipment to and from the different sites. Furthermore, through our wide pool of national and international engineers, we can assist our customers in a wide range of solutions.



www.sotravic.net

Industrial Zone, La Tour Koenig, Mauritius
Tel: +230 405 7800 | Fax: +230 405 7801